

DR90 SERIES

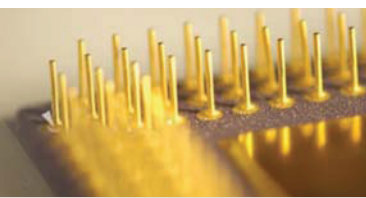


D.I Water and Gas High Flow Low Pressure Regulators

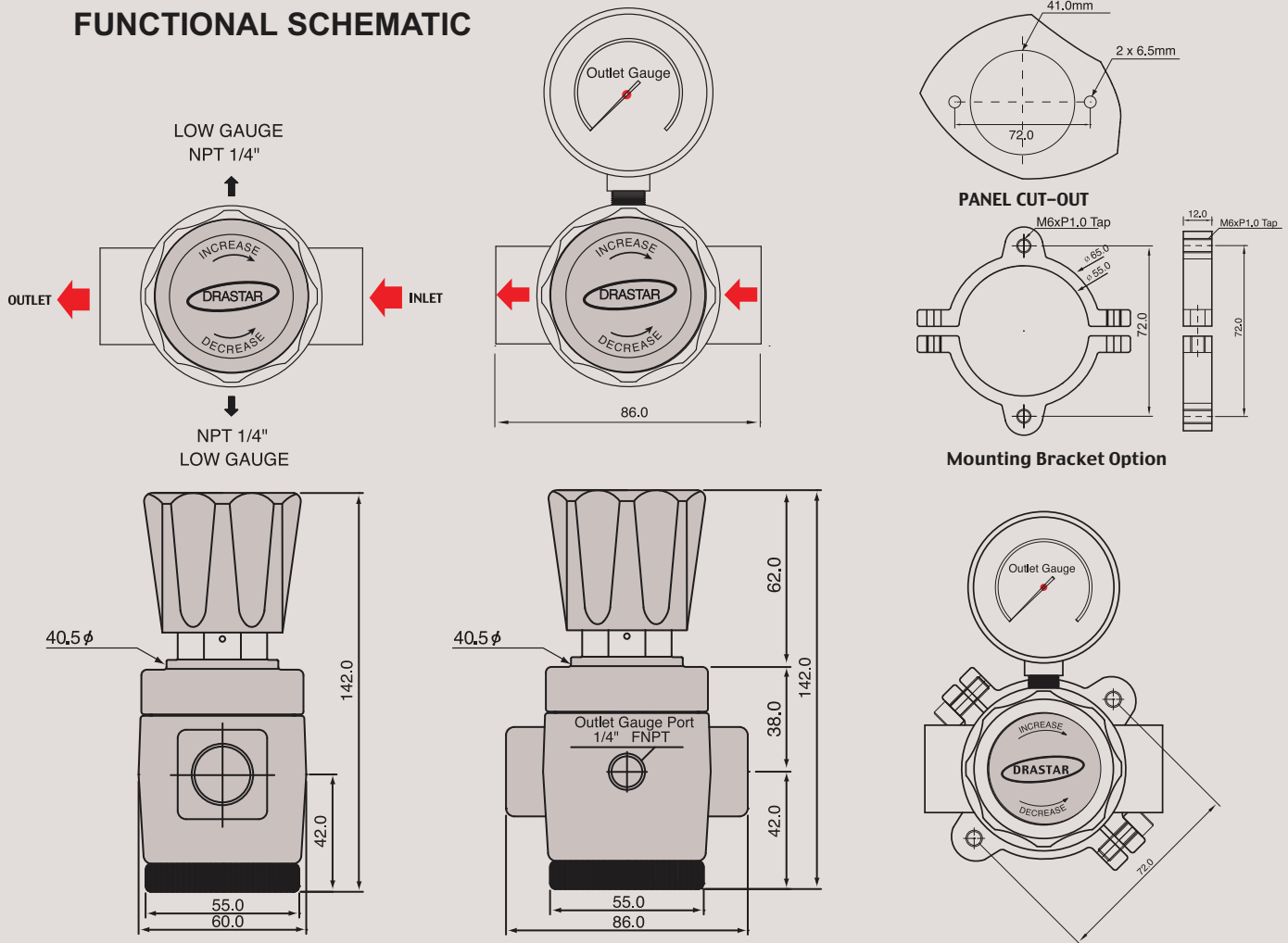


DR90 SERIES

This catalogue is revised and/or updated as of Jan. 2020 and supersedes any old ones.
이 카탈로그는 2020년 1월에 개정 또는 업데이트 되었으며 이전의 카탈로그를 대체합니다.



FUNCTIONAL SCHEMATIC



D.I Water and Gas High Flow NPT 3/8", 1/2", 3/4", 1"

DR90 시리즈는 D.I Water, 산업용 가스, 에어 또는 물 라인 등에 사용하기에 이상적인 Cv=4.0제품입니다.

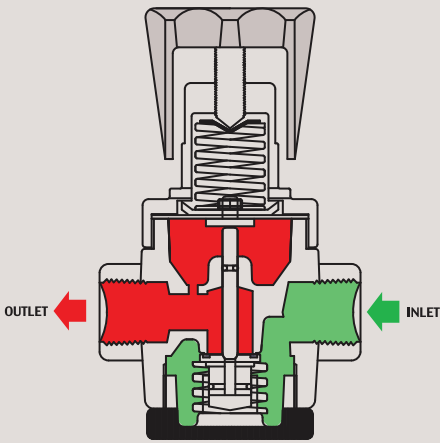
- DR905 시리즈는 D/I Water (순수 또는 초 순수) 전용 제품입니다.
- DR90 시리즈의 본체는 모델에 따라 Stainless Steel 316L, 또는 Brass로 제작되며, 내부 부품은 Stainless Steel, Valve Seat는 NBR, Viton (DR905)을 사용하여 가스 및 물 등에 내구성이 뛰어나며 다이아후름은 NBR 또는 Teflon(DR905)을 사용하였습니다.
- 3-Ports NPT 3/8", 1/2", 3/4", 1" 중에서 선택 가능합니다.
- 입구압력은 최대 42bar (600psig)이고 출구압력은 모델에 따라 0.3bar(5psig)에서 최대 15bar (210psig)까지 사용 가능합니다.

※ 주의 : 크린라인이 아닌 일반 라인에 사용 할 경우 반드시 필터링(gas 7 μ m~15 μ m, water 15 μ m~80 μ m)를 하여야 하며, 그렇지 않을 경우 바로 고장의 원인이 됩니다. 모든 제품은 필터링하여 사용하면 A/S 비용 절감과 제품의 수명연장에 많은 도움이 됩니다.

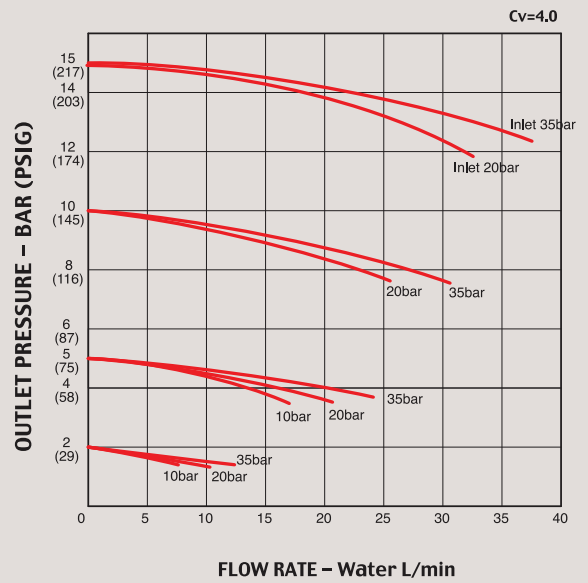
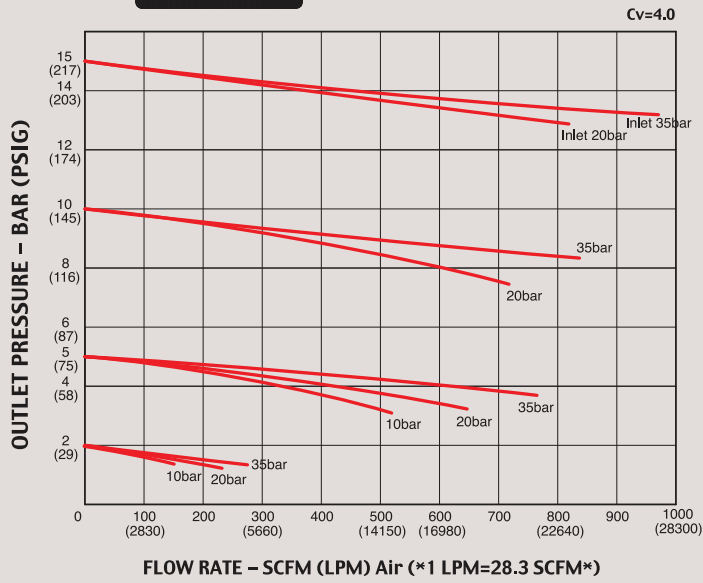
DR90 Series with Cv4.0 is a NPT type pressure reducing regulator ideally designed to use for D/I water, general industrial gases, air or water line. 3/8", 1/2", 3/4", or 1" NPT type ports of connection are available.

Features & Applications

- 3/8", 1/2", 3/4", or 1" NPT type port of connection available
- Inlet pressure is 42bar(600psig) and outlet pressures are 5bar(72psig), 10bar(145psig), 15bar(210 psig)
- Panel mounting bracket available as option
- Design proof pressure: 150% of maximum rated
- Suitable for D/I water, industrial gases, air or water line (Cv = 4.0)



FLOW CHART



※ DRASTAR's all pressure regulators are assembled, cleaned, inspected, and packed in clean-room equipped with clean bench, helium detector, particle counter, ultrasonic cleaner, ultrapure water system, vacuum packaging machine, etc. through oxygen cleaning procedure in compliance with process and regulations indicated in CGA 4.1. and or ASTM G-93 and are free of any grease or oils.

※ **Caution:** Filtering (gas 7 μ m~15 μ m, water 15 μ m~80 μ m) is a MUST to use in the general gas application other than high purity gases. Otherwise, it may cause a failure to the regulators. It is strongly recommended to install filter for extension of life span and saving the maintenance expense.

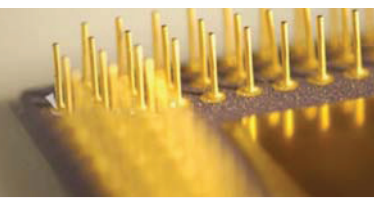
ORDERING INFORMATION

DR90 - S 005 - NP2

BASIS SERIES NUMBER	BODY MATERIAL	CONTROLLED PRESS. RANGES	IN & OUT PORTS SIZE
DR901 = Bolt Control DR902 = Knob Control	S = STS 316L	005 = 5bar(72psi)	NP8 = NPT 3/8" PT8 = PT 3/8"
DR905 = Knob Control Only Di Water	STS-304	010 = 10bar(145psi)	NP2 = NPT 1/2" PT2 = PT 1/2"
Inlet Pressure Max. 42bar(600psi)		015 = 15bar(217psi)	NP3 = NPT 3/4" PT3 = PT 3/4" NP1 = NPT 1" PT1 = PT 1"

DR90

SERIES



Specifications

In/Outlet Port Size	3/8", 1/2", 3/4", 1" FNPT / Gauge port: 1/4" NPT
Body	Stainless Steel 316L
Bonnet	Zinc (Zn) Casting Nickel Plated
Diaphragm	Particular of Synthetic Rubber (NBR)
Main Valve	Stainless Steel 316L
Valve Spring	Stainless Steel 316L
Valve Seat	Viton / NBR
Maximum Inlet Pressure	42bar (600psig)
Outlet Pressure Range	5bar(72psig), 10bar (145psig), 15bar (217psig),
Design Proof Pressure	150% of maximum rated
Leakage	to 2x10 ⁻⁶ atmcc/secHeliumavailable
Operating Temperature	-40°C to +70°C(-40°F to +160°F)
Flow Capacity	Cv = 4.0
Other Options	Pressure Gauges, etc.
Weight	Approx. 1.6Kgs

